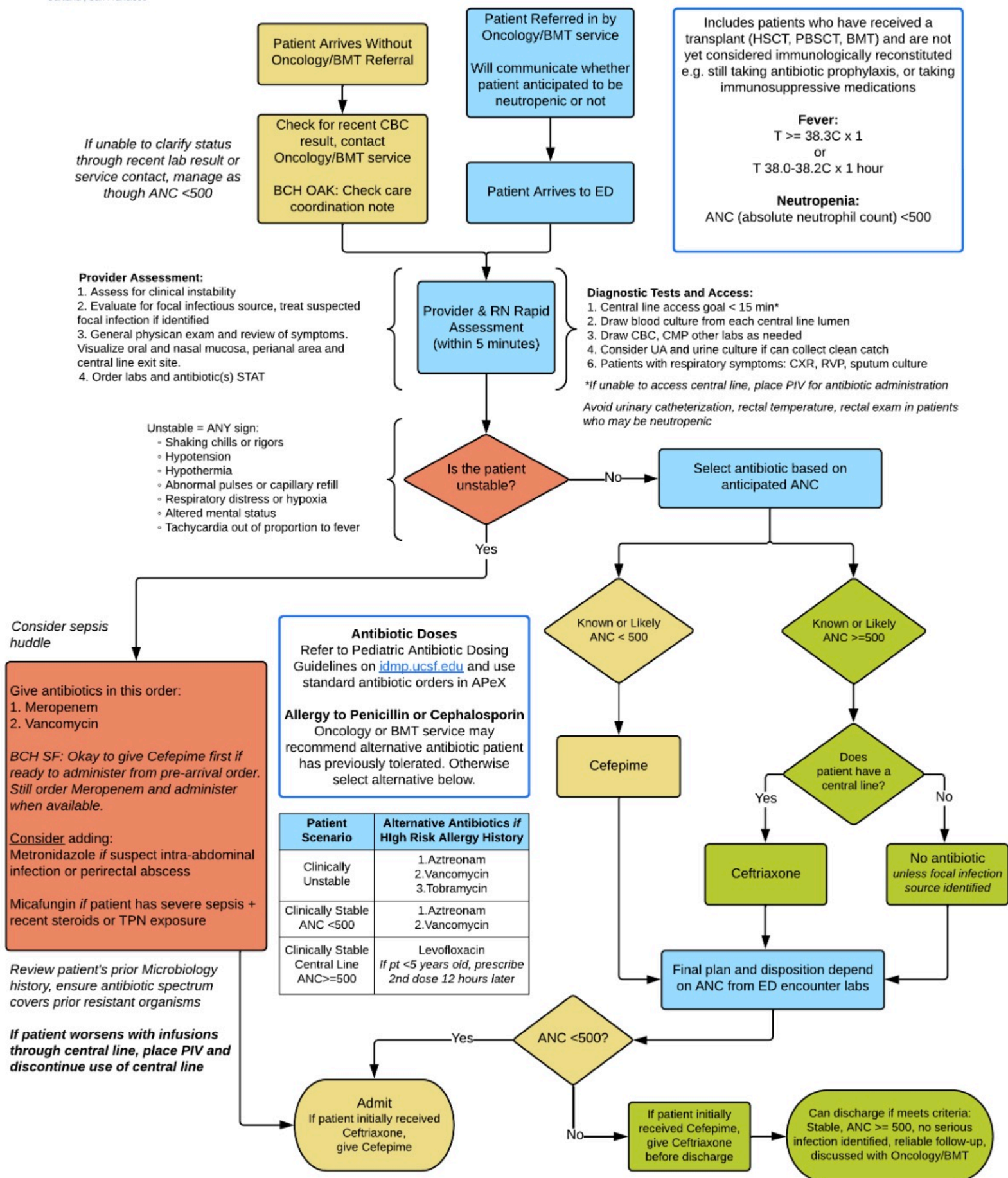


Fever in Patients Receiving Cancer Therapy and/or Hematopoietic Transplant Emergency Department Algorithm



These are guidelines only and are not intended to replace clinical judgment. Modification of therapy may be indicated based on patient comorbidities, previous antibiotic therapy or infection history. For additional guidance on antibiotic selection, contact the Pediatric Antimicrobial Stewardship Program or Pediatric ID.

4