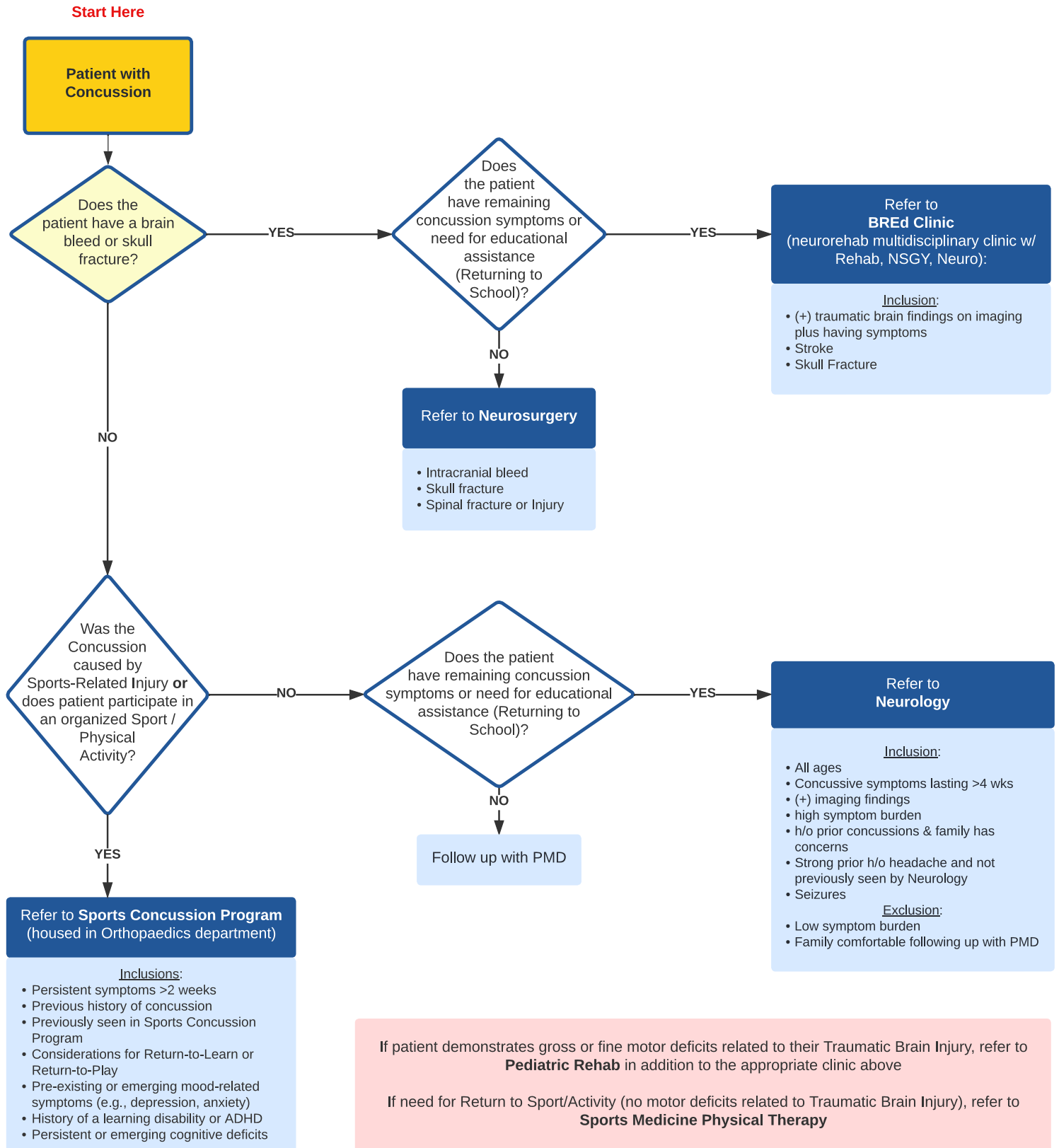


BCH Oakland Concussion Referral Flow

*All patients are referred to PMD for follow-up appointment

If Concussion patient has **NO** symptoms and **NO** need for return to Sport Clearance,
can follow-up with PMD

If no PMD, can follow-up in General Surgery Clinic



Brain Injury Resource Reminders

Clinical Practice Guidelines:

Power DMS → Documents → BCH Oakland Clinical Guidelines → Trauma Services

- 8.10a Moderate/Severe Traumatic Brain Injury Guidelines
 - 8.10b Mild Traumatic Brain Injury Guidelines

Patient Education:

- Utilize dot-phrases in AVS for complete Patient Family education
- **.CONCUSSIONDCIPEDS** – For use in patients >5 years old
 - **.CONCUSSIONDCIBABY**—For use in patients <5 years old

These will automatically pull in the appropriate educational Guide and for those over 5 years old, a Return to Learn/Play Care Plan

Documentation Integrity:

- For admitted TBI patients, please *avoid* the word “probable” or “suspected” when referring to Concussion diagnosis.
- Concussion Diagnosis should be listed in narrative for those who are admitted with mild TBI *and* displaying post-concussive symptoms.

Patient Consults:

- Cognitive Evaluation is indicated in TBI or concussed patients who have:
- + LOC at injury **OR** • + finding on brain Imaging **OR** • GCS < 15 on arrival
- All TBI patients with **headaches** should be referred to **Complex Pain Consult**
- Will utilize Pain Services and Integrative Medicine